

Historic Downtown Office Building

Tastefully Renovated in 2000

Located in Highly Desirable Downtown Core

Location



Land

Land Size- .66 AC +/-
Dimensions- 192' x 155'
Frontage- 192'
Parking Spaces - 45
Lighted Parking Lot
Frontage on 2 streets

Location Advantages

- Just Off Interstate
- Convenient to all Financial, Federal and Judicial Institutions
- Superior Access

Stunning Class “A” Stand Alone

Opportunity to own one of Downtown Pensacola’s Premiere Office Buildings.

Unique, Stand -Alone, Two-Story, Red Brick Building.

Classic Architecture, Beautifully Maintained.

Originally Built in 1930 as the “Carpenters Union Hall” the building has been preserved, maintained and thoughtfully renovated in 2000.

*114 E. Gregory Street
Pensacola, FL. 32502*

Building Description

- 20+ Private Offices
- 14,324 SF +/-
- Dedicated Reception Areas
- Administrative Support Stations
- Small intimate conference areas
- Formal Conference Rooms
- File Rooms
- Server Rooms
- Storage Areas
- Elevator plus two stairwells

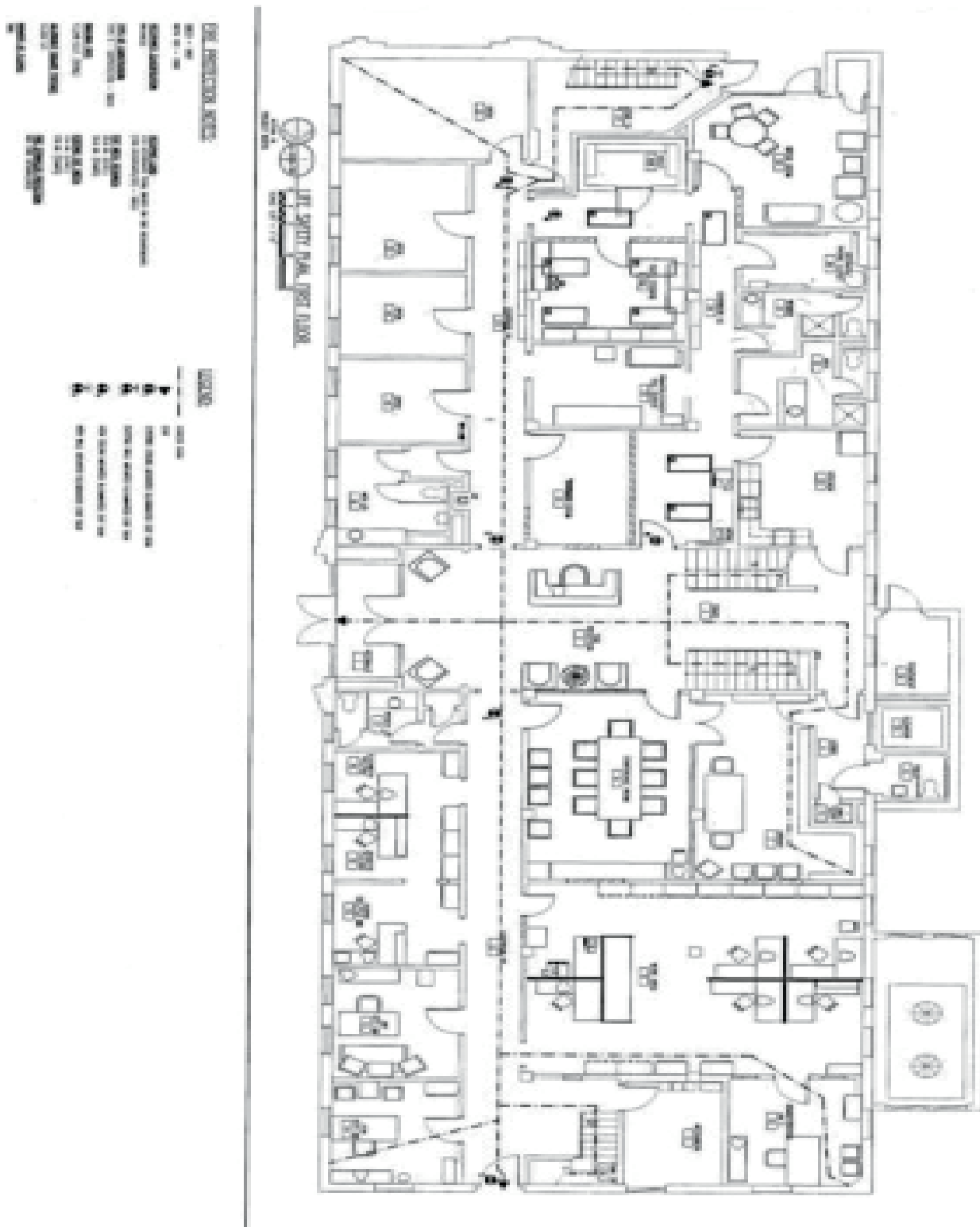
*For Sale
\$2,450,000*



Photos

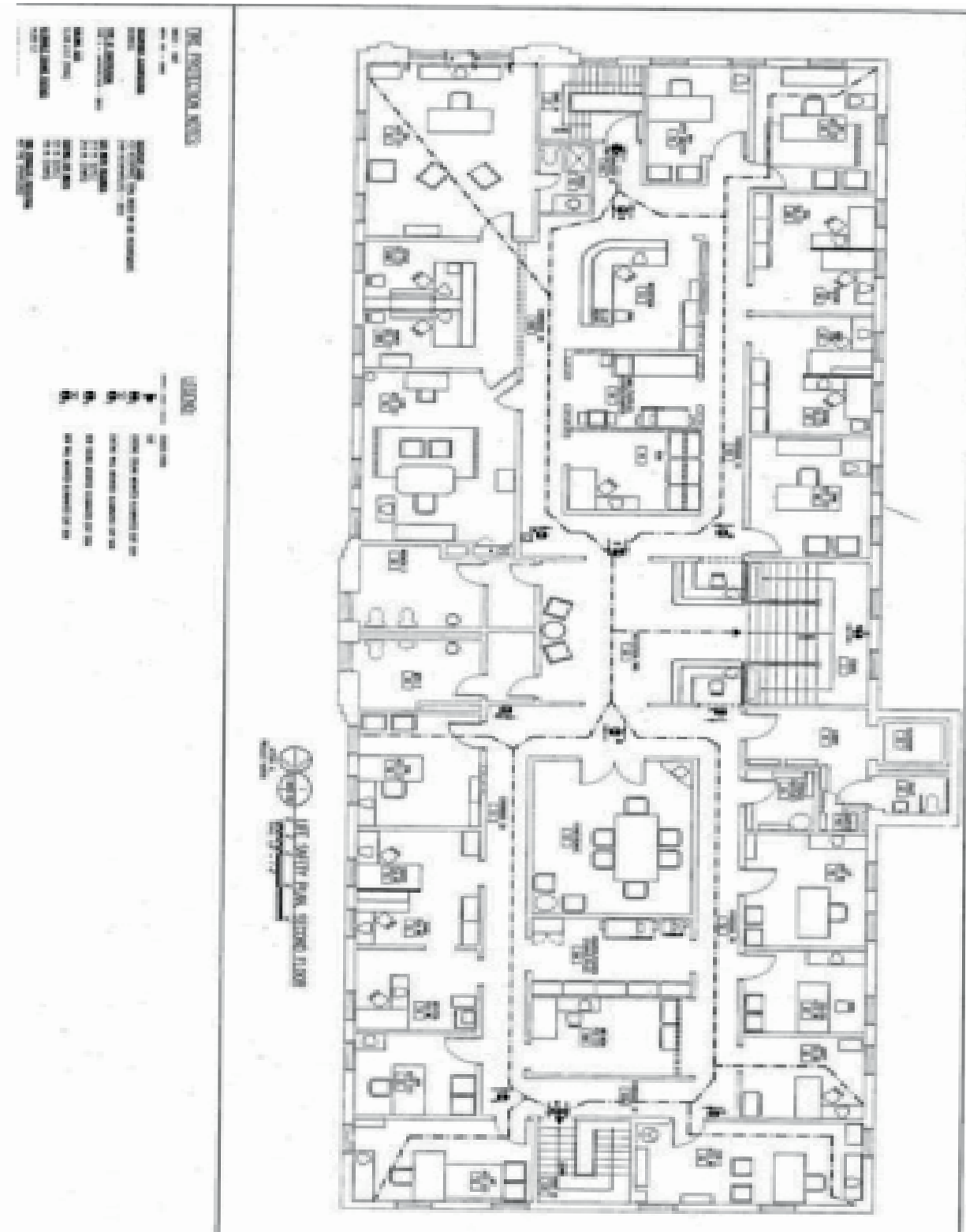


1st Floor



NO WARRANTY OR REPRESENTATION, EXPRESS OR IMPLIED, IS MADE AS TO THE ACCURACY OF THE INFORMATION CONTAINED HEREIN, AND THE SAME IS SUBMITTED SUBJECT TO ERRORS, OMISSIONS, CHANGE OF PRICE, RENTAL OR OTHER CONDITIONS, PRIOR SALE, LEASE OR FINANCING, OR WITHDRAWAL WITHOUT NOTICE, AND OF ANY SPECIAL LISTING CONDITIONS IMPOSED BY OUR PRINCIPALS NO WARRANTIES OR REPRESENTATIONS ARE MADE AS TO THE CONDITION OF THE PROPERTY OR ANY HAZARDS CONTAINED THEREIN ARE ANY TO BE IMPLIED.

2nd Floor



Proven Record of Success
What can we do for you today?

Committed to Northwest Florida Connected to the World

NAI Halford is the Northwest FL affiliate of NAI Global operating as a single unit offering full service, multi-market brokerage where you are and where you want to grow in Florida.

We are local experts working together with global management, shared processes, and cutting edge technology to deliver consistent, quality results.

Visit us at our website www.naihalford.com to find the broker best-suited to be your single point of contact to begin or continue your expansion in Florida.

NAIHalford